

Technical data sheet

SINNODUR Grout

Acid and alkaline resistant, environmentally friendly new binder system
With official test certificate. Conforms to the DVGW 347 "Recommendations for using in contact with potable water".

Product description and advantages

Sinnodur Grout is a 1-component joint mortar with a new binder system with unique innovative properties. **Sinnodur Grout** is easy to use like other cement based products. The joint mortar has a good consistency and at the same time it is easy to apply.

The mortar has the following outstanding properties and benefits:

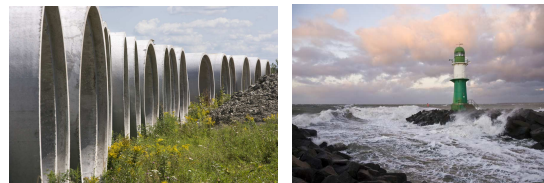
- *Single component, joint mortar*
- *Just mix with water*
- *For use on horizontal and vertical surfaces*
- *High economic efficiency*
- *Environmentally friendly raw materials*
- *Not classified as hazardous*
- *Very resistant against mechanical loads*
- *Resistant to diluted chemicals (Acids, alkaline and solvents)*
- *Shrinkage free and crack-free curing*
- *Completely inorganic*
- *No efflorescence due to zero $Ca(OH)_2$*
- *Enhance durability*

Range of application

SinnodurGrout can be used horizontal and vertical in internal and external areas:

- *Interior and exterior work on floors and walls*
- *Domestic buildings*
- *Industrial kitchens*
- *Agriculture*
- *Workshop / Garage*

- *Warehouses*
- *Shopping area*



Technical data

Flexural strength 28d	3,5 N / mm ²
Compressive strength	30 N / mm ²
Capillary water	30 min. < 1g = 0,37%
Absorbance EN 12808-5	240min. < 2g = 0,66%

Application data

Bulk density	1,1 kg / dm ³
Water requirement	15-17% wall 16-18% floor
Mixing ratio	3,75 liter/25kg wall 4,5 liter/25kg floor
Applid by	trowel
Working time (20°C)	30 – 60 min.
Air- and ambient-temperatur	min. +5°C, max. +45°C
With of joint	2 – 25 mm
Drying time	1 day walkable 3 days full load
Heat resistance	300°C

Direction of usage

To avoid colour differences, mix the total required quantity in one process and follow the following directions:

- Mix the joint mortar with the specified quantity of water
- Do not use on surfaces with different surface temperatures (e.g. warm water or heating pipes or sunshine)
- Make sure the absorbency of the substrate as well as the sides of the joints is uniform
- The surfaces must be free of cement and gypsum dust or adhering cement-gypsum residue
- Protect from strong sunshine and wind while setting.

Because of the very different influences that can result from the substrate and surrounding, we can-not guarantee a uniform color. If necessary, set up a trial area.

Preparation of the substrate

Before the joints are filled, they should be chased out to a sufficient depth, i.e. at least 2/3 the thickness of the tile (at least 3 mm). Clean the joints thoroughly and remove all loose material, soiling, cement, gypsum and any adhering cement or dust. The edges of the joints must be free of oil and grease and the surface of the tiles should be cleaned with a lightly damp sponge. The tile cover must adhere tightly, e.g. the mortar or tile cement must have completely set.

Mixing and application

The bucket in which the three 5 kg bags of mortar are supplied can be used for mixing. The mixing ratio specified must be strictly observed. Do not mix **Sinnodur Concrete** with cement-based products. The material has to be mixed for 1 minute intensely and after 3 minutes of maturing time mix the material for another minute. Do not mix more joint mortar than can be worked in 40 minutes. The dry mortar and the water used for mixing must have a temperature of at least +5°C when mixed. Recommended temperature: between +5°C and +35°C.

Washing Procedure

Clean the surface of the tiles with the sponge-backed board and using a slightly damp sponge. The wash water should be changed often so that no residue remains. Any initially dried residue still left is removed by cleaning the entire surface with clean water. Any material that runs down on wall surfaces should be removed with a sponge.

Delivery and pageage

The delivery is 1 Bucket containing 3 bags with 5kg powder. A well sealed original packaging, stored in dry and temperated areas (not below 0°C, recommended 10-25°C) has 6 months shelf life.

Safety, ecology and disposal

For **Sinnodur Concrete** no hazard labeling is required. Further information concerning safety during transport, storage and handling as well as for disposal is found in the latest Safety Data Sheet. The current datasheets are available at www.sinnotec.eu. Also consider the instructions on the packaging.

Notes

With colored joint filler materials some minor color differences are inevitable due to different production batches. This should be taken into account while performing work. If a uniform color is desired, it is necessary to work on designated sections with the same batch (see label). Basically, it should be noted that this colored coating is a mineral/inorganic product. The product colors are not fully in accordance with the RAL-Map and therefore they should only be seen as approximate classifications.

The correct and hence successful application of our products is not within our control. A guarantee can therefore only be given for the quality of our products. This data sheet supersedes all earlier technical data on this product. Information supplied by our employees and/or distributors going beyond the information contained in this data sheet must be confirmed in writing. We reserve the right to make changes representing technical progress.